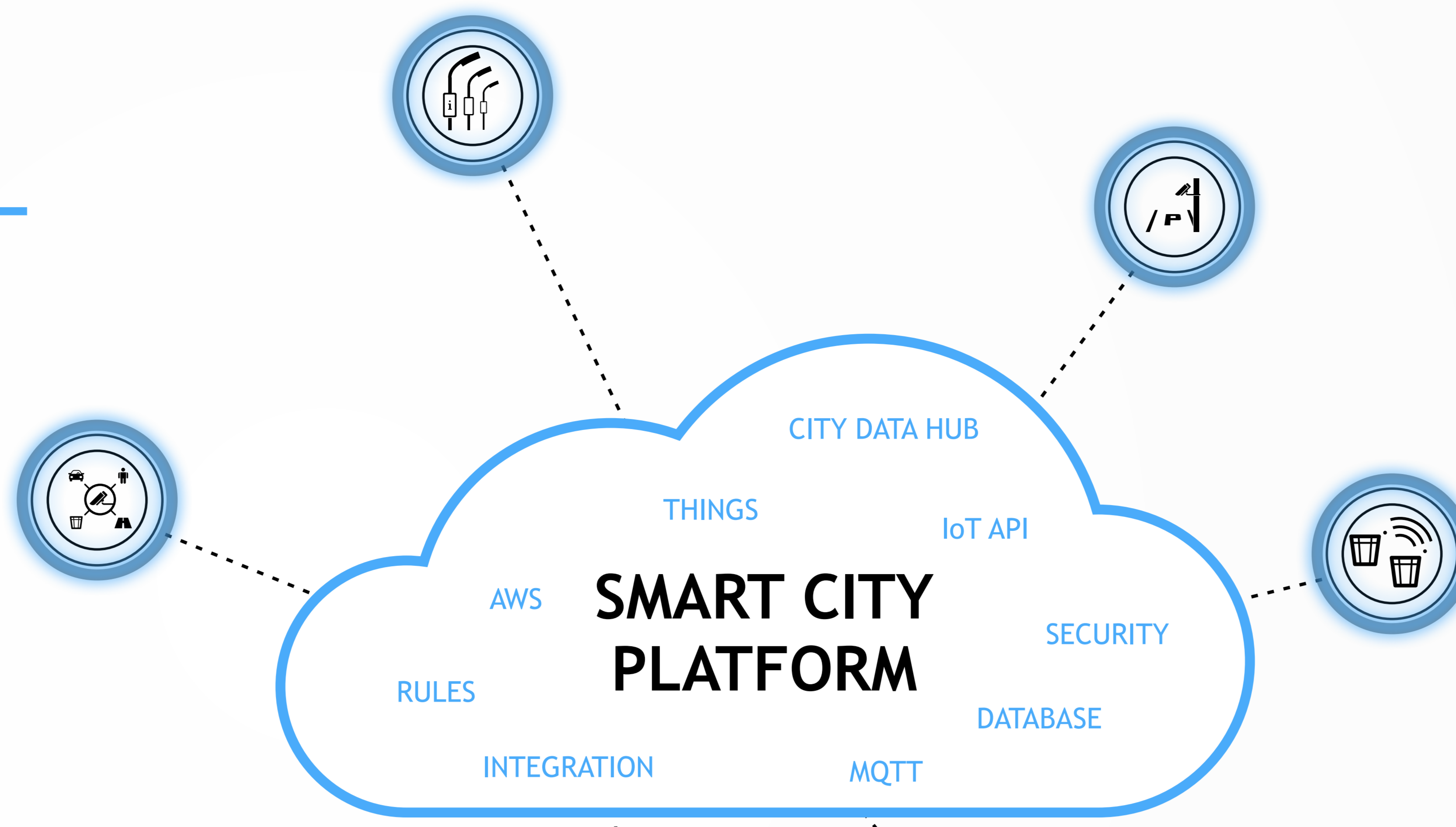


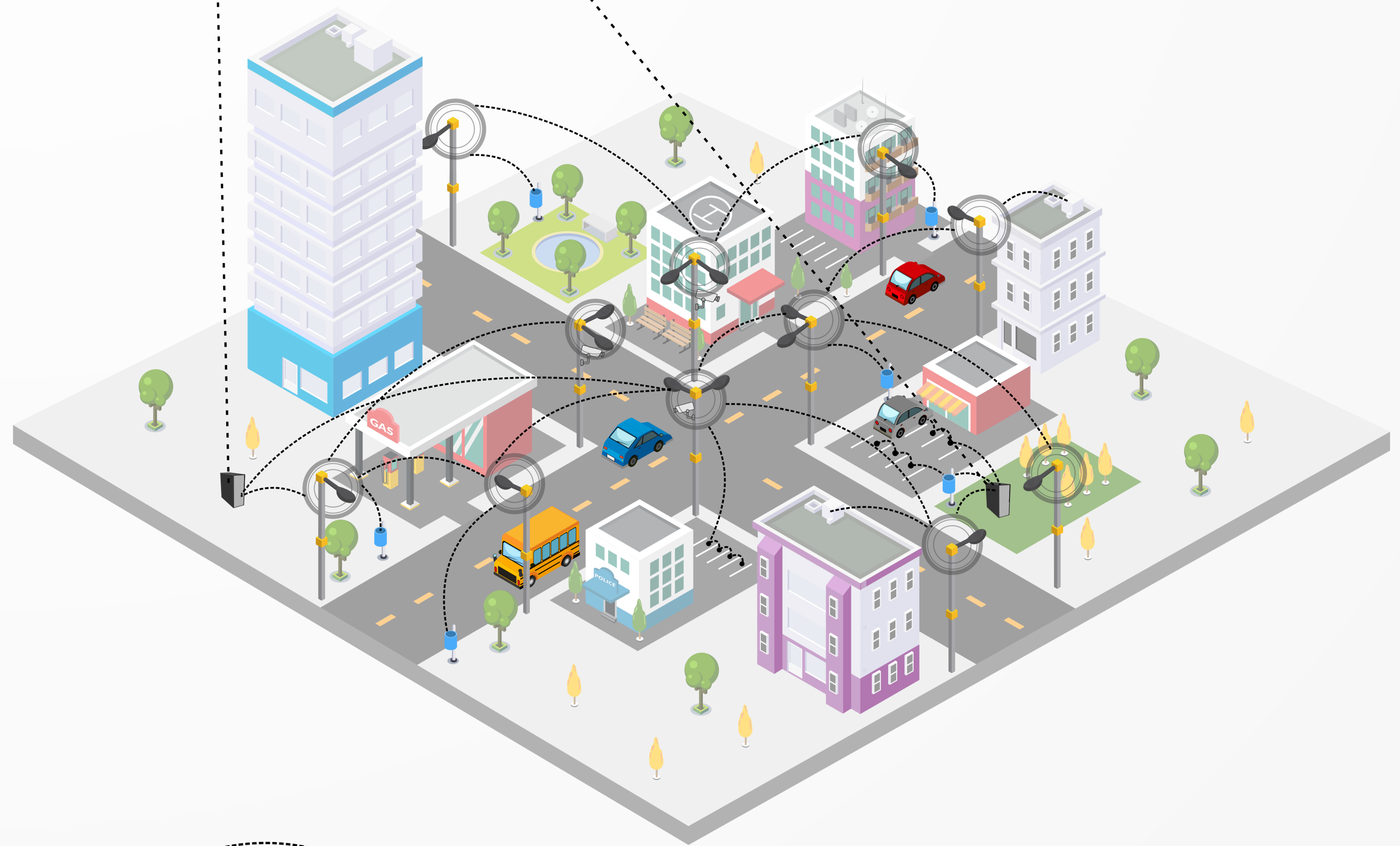
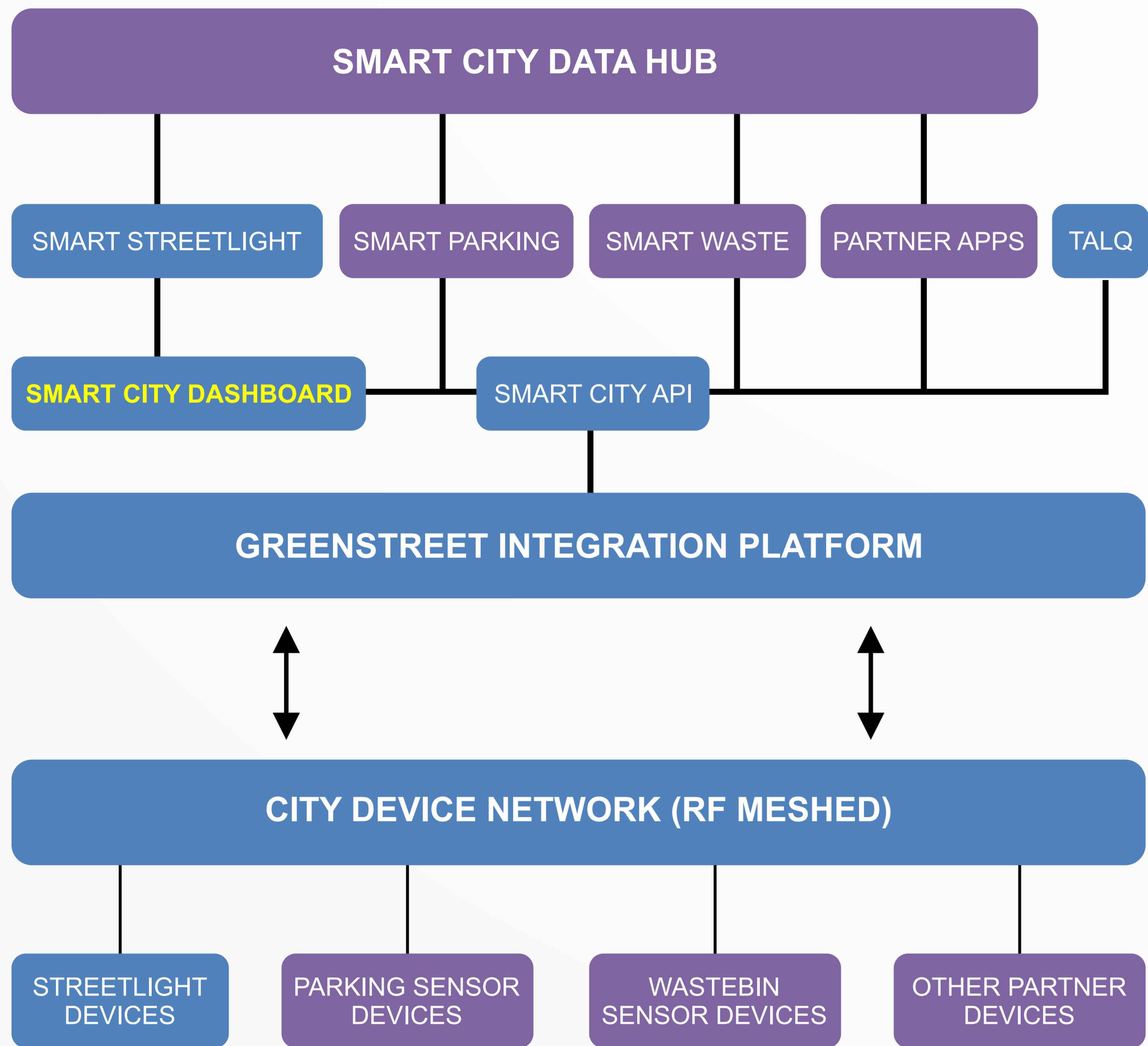
SMART CITY

GreenStreet offers a flexible solution for a city to create its own infrastructure for IoT (Internet of Things) and to get ready for the future needs of a Smart City.

The infrastructure is open and is based on standard protocol, thus allowing different companies to be able to contribute to innovative applications and services to the city ecosystem.

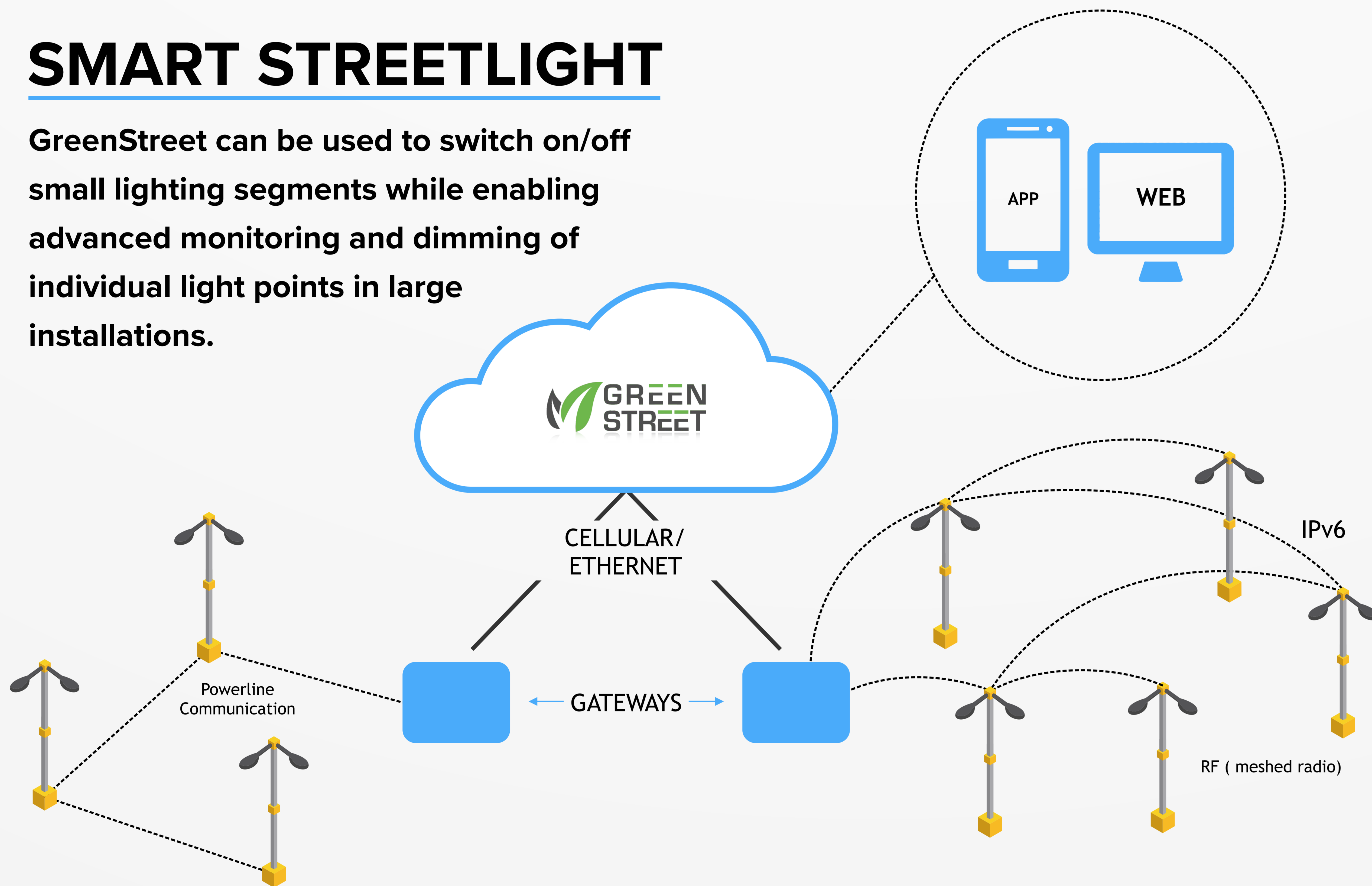


- Smart City platform with high security
- Highly scalable with millions of RF devices
- Open and standardized protocol Ipv6
- The cities will have their own infrastructure without additional costs
- Cutting-edge meshed RF designed for large IoT installations
- Based on unlicensed frequencies, 2.4 GHz and 868 MHz
- Partner programs to encourage a dynamic ecosystem with applications and services



SMART STREETLIGHT

GreenStreet can be used to switch on/off small lighting segments while enabling advanced monitoring and dimming of individual light points in large installations.



- Use the sufficient light level for the current situation
- Up to 50% energy savings
- Up to 40% reduction in operational costs
- Increasing safety and security with smart control
- Be in control of luminaries and other assets
- Open solutions based on standard protocol (Ipv6)

- On/off/dim control using WEB and APP
- Adaptive control based on calendar and sensor control
- RF (meshed), IPv6, open frequencies, 2.4 GHz and 868 MHz
- Standard powerline communication (ISO/IEC 1498-3)
- Measurement of energy consumption and burning hours
- Real-time information about the site's electrical parameters

SMART WASTEBINS

Avoid empty waste bins in the collecting rounds! Waste bins report their fill-level by connecting to the cloud via the closest streetlight.



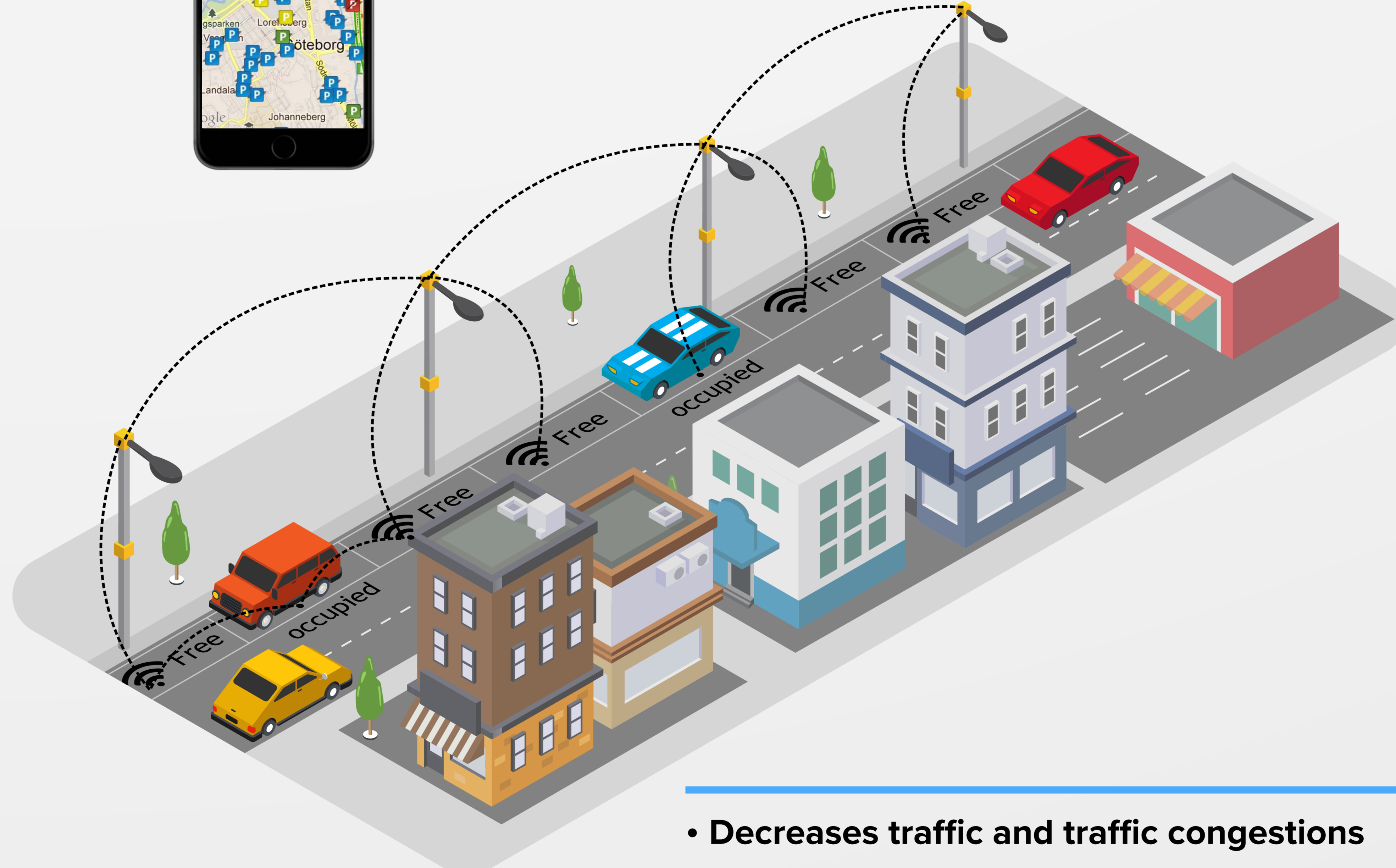
- Increases the fill-level when collecting
- Reduces unnecessary collection stops
- Avoids overfilled trash cans
- Allows more efficient planning and collection routes
- Provides statistical data for city planning

Parking App



SMART PARKING

Receive guidance to available parking space! Parking spaces report whether they are available by connecting to the cloud via the closest streetlight.



- Decreases traffic and traffic congestions
- Minimizes car emissions
- Reduces time and stress for drivers and passengers
- Ensures more effective uses of parking spaces
- Provides statistical data for city planning